



# TEREX® | FUCHS

# MHL 335

## MATERIAL HANDLER

<b>ENGINE</b>	153 HP (114 kW)
<b>WEIGHT</b>	51,808 - 55,115 lbs (23.5 - 25 t)
<b>REACH</b>	39.4' (12 m) 36' (11 m) 35' (10.7 m)



- ▶ High-performance 153 HP (114 kW) turbocharged diesel engine (TIER III/COM III)
- ▶ Operating weight from 51,808 - 55,115 lbs (23.5 - 25 t)
- ▶ Load limit control with automatic idle
- ▶ Efficient hydraulic system
- ▶ Multi-functional display
- ▶ Large stabilizer base
- ▶ Strong lifting capacities

SCRAP RECYCLING MACHINE  
**MHL 335**

The machine can be fitted with optional equipment

# THE MHL 335 WILL ADD A BOOST



## **SLEWING STRENGTH**

A particular strength of the Terex® Fuchs recycling machines is the precisely coordinated combination of slewing motor and gear, which enables loading maneuvers that are just as powerful as they are exact. The special end-of-stroke cushioning of the lifting and stick cylinders minimizes component wear even when carrying out quick movements with heavy loads. These features facilitate efficient operations.



# TO YOUR PRODUCTIVITY

HIGH INCREASE IN OUTPUT. GREAT LOAD CAPACITY. AND LOW CONSUMPTION.

## STABILITY WITH HEAVY LOADS

In the recycling business it is critical to be able to maneuver heavy loads in a quick and safe manner without constricting the working radius. With its large and solid undercarriage, the MHL 335 is ideally suited to satisfy this requirement. The undercarriage width of 8.9' (2.7 m) and large outrigger cylinders and boxes, enhances stability while manipulating loads.

### MACHINE AND HYDRAULIC FEATURES AT A GLANCE

- ▶ Large stabilizer base (16.7' x 14.1'/5.1 x 4.3 m) and solid undercarriage (width of 8.9'/2.7 m) with large outrigger cylinders for greater lifting capacities
- ▶ Optimal coordination of slewing motor and gear for quick and precise maneuvering even with heavy loads
- ▶ Special cushioning of the lifting and stick cylinders for reduced wear even with quick end-to-end motions



# A FULL OVERVIEW IN THE BL

NOTHING MISSED. EVERYTHING CAPTURED. ALWAYS

## CAB AND STEERING FEATURES

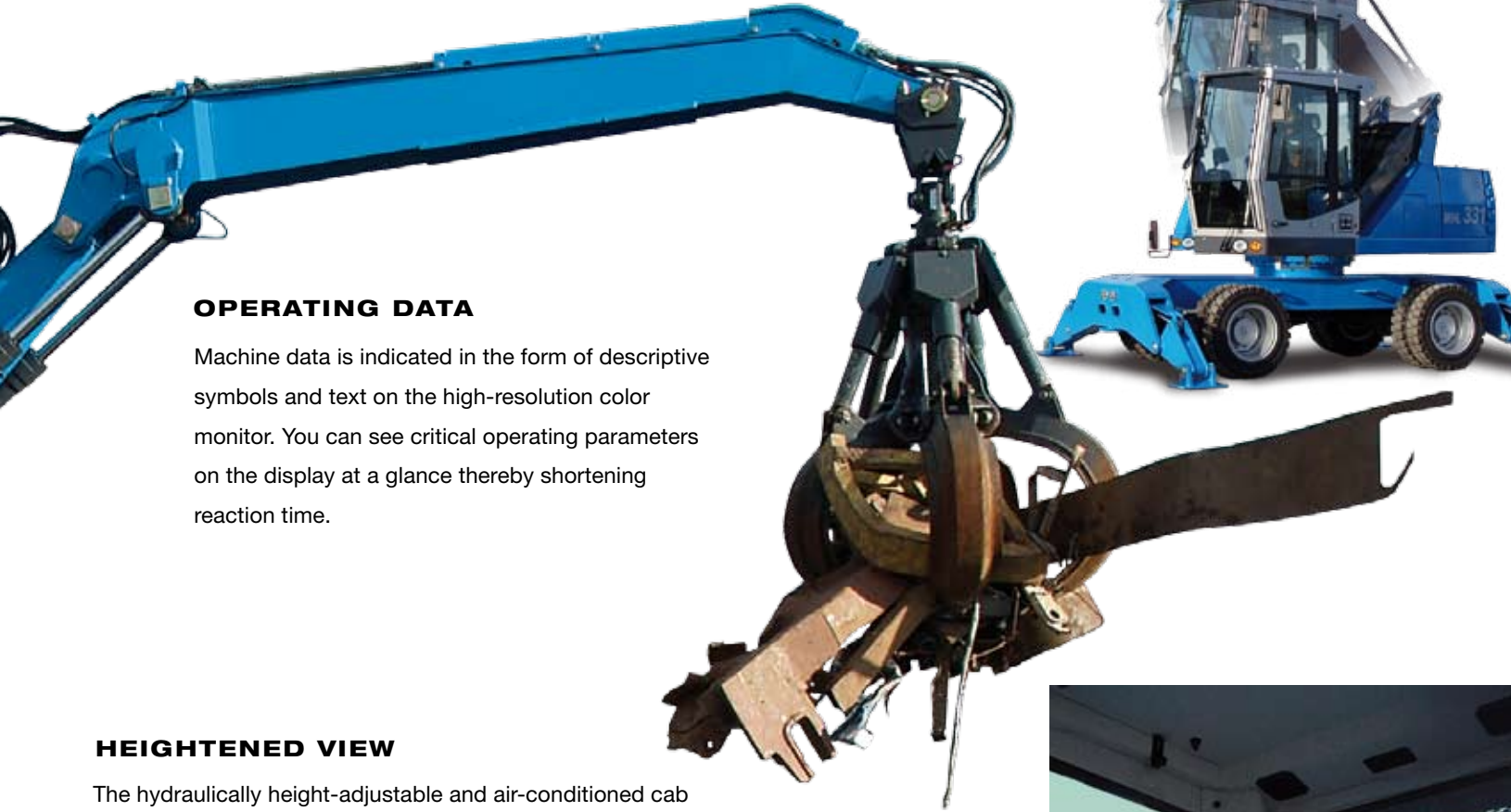
## AT A GLANCE

- ▶ High-resolution color display with clear text and precise symbols for quick information about important operating data
- ▶ Electronic steering with CAN bus technology
- ▶ Ergonomic focus in the cab: air-cushioned seat with lumbar support, comfortable access to the controls and standard air-conditioning
- ▶ Hydraulically elevating cab up to 17.4' (5.3 m) maximum eye level and large panoramic windows enhance view of the work environment



# INK OF AN EYE

INFORMED.



## OPERATING DATA

Machine data is indicated in the form of descriptive symbols and text on the high-resolution color monitor. You can see critical operating parameters on the display at a glance thereby shortening reaction time.



## HEIGHTENED VIEW

The hydraulically height-adjustable and air-conditioned cab with its large panoramic windows allows for easy viewing of your work area. But that is certainly not the only advantage; the air-cushioned adjustable seat with lumbar support and ergonomically arranged instruments also enhances operational comfort as well as productivity.



# THE POWER PACKAGE FOR C

INNOVATIVE COOLING TECHNOLOGY. PROVEN ENGINE

## KEEPING COOL

Terex® Fuchs has developed innovative cooling technologies. Efficient and effective cooling of the machine promotes longevity of components. The separate cooling systems, with a hydrostatically powered oil-cooling fan and water intercooler that is connected by a viscous-coupling, achieve excellent cooling performance while operating quietly. The fan speed is temperature-controlled up to 122°F (50°C) ambient air temperature.

## COOLING SYSTEM AND ENGINE FEATURES AT A GLANCE

- ▶ Excellent and consistent cooling performance with low noise emissions
- ▶ Separate hydraulic oil and engine cooling systems for maximum cooling efficiency
- ▶ Minimize dust deposits through optimized cooling fins and ventilators
- ▶ High-performance turbocharged engine with low emissions values
- ▶ EMR III engine control for low noise emissions
- ▶ Special options, such as particulate and intake air filters as well as pressurized air supply for operation indoors
- ▶ Components are easily accessible via fold-away steps leading to the maintenance platform



## HIGH PERFORMANCE, LOW CONSUMPTION

At the core of the machine is a powerful turbocharged diesel engine with common-rail fuel injection, providing an output of 153 HP (114 kW) and a maximum torque of 401 lb<sub>f</sub> ft (544 Nm). The engine operates quietly with low emissions complying fully with TIER III and COM III emissions standards.



# COOL MOVES

QUALITY. EXCEPTIONALLY LOW EMISSION VALUES

ANCE



## A CLEAN DEAL

The standard cooler with a low, temperature-controlled fan speed and optimal arrangement of the cooling fins protects the cooling system from dust. Additional options are available, such as particulate filters, reversible fans, filter mats and Zyklon separators. An airtight cab with pressurization and air supply is also available if required.

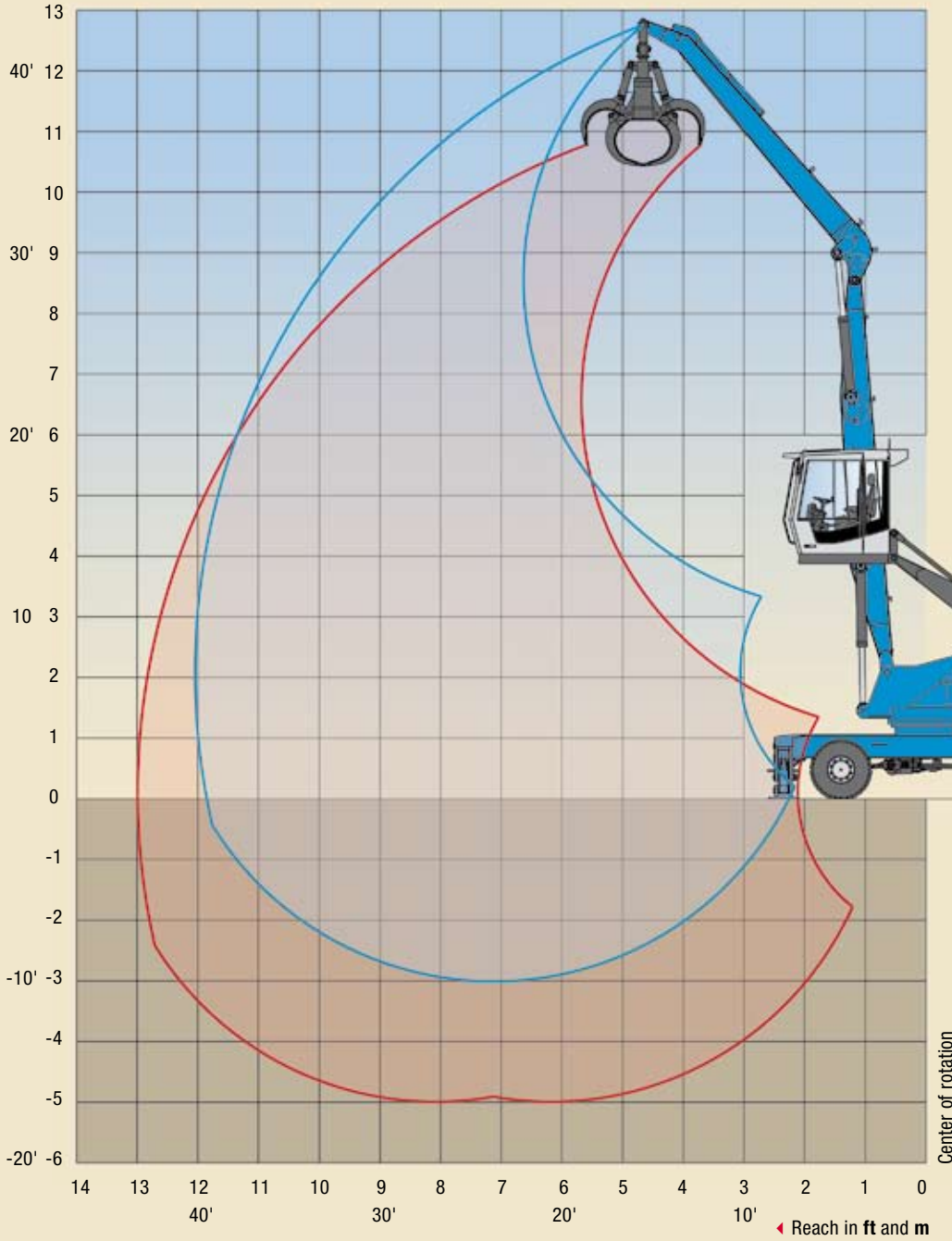
## EASY TO SERVICE

The standard central lubrication system for the uppercarriage reduces maintenance time. Service tasks are easier to execute. Components can be serviced either from the ground or through easy access to the maintenance platform by climbing convenient fold-away steps.



# WORKING DIAGRAM

MHL 335 REACH 39.4' (12 m)



Work equipment:  
box-type boom 21.3' (6.5 m),  
dipperstick 17.9' (5.45 m)



# LIFTING CAPACITY

## MHL 335 REACH 39.4' (12 m)

HEIGHT (ft)	UNDERCARRIAGE STABILIZERS	REACH (ft)					
		15	20	25	30	35	40
35	non supported			(9,750*)			
	4-pt. supported			9,750* (9,750*)			
30	non supported			(10,070)	(7,420)		
	4-pt. supported			11,330* (11,330*)	9,110* (9,110*)		
25	non supported			(10,030)	(7,440)	(5,690)	
	4-pt. supported			11,360* (11,360*)	10,770* (10,770*)	7,100* (7,100*)	
20	non supported			(9,820)	(7,330)	(5,670)	
	4-pt. supported			11,930* (11,930*)	11,040* (11,040*)	8,720 (9,840*)	
15	non supported		(13,400)	(9,470)	(7,130)	(5,560)	
	4-pt. supported		14,800* (14,800*)	12,930* (12,930*)	10,960 (11,580*)	8,620 (10,570*)	
10	non supported	(19,560)	(12,580)	(9,020)	(6,870)	(5,420)	(4,390)
	4-pt. supported	22,400* (22,400*)	17,140* (17,140*)	14,100* (14,190*)	10,680 (12,270*)	8,460 (10,490)	6,400* (6,400*)
5	non supported	(17,750)	(11,730)	(8,560)	(6,600)	(5,270)	(4,330)
	4-pt. supported	27,150* (27,150*)	19,110 (19,450*)	13,590 (15,430*)	10,390 (12,940*)	8,300 (10,330)	6,850* (6,870*)
0	non supported	(16,570)	(11,070)	(8,180)	(6,370)	(5,150)	
	4-pt. supported	19,980* (19,980*)	18,360 (21,000*)	13,170 (16,300*)	10,140 (12,720)	8,170 (10,190)	
-5	non supported	(16,080)	(10,700)	(7,930)	(6,220)	(5,080)	
	4-pt. supported	16,440* (16,440*)	17,930 (21,340*)	12,890 (16,410*)	9,980 (12,550)	8,090 (10,110)	
-10	non supported			(7,840)			
	4-pt. supported			12,790 (15,770*)			

Capacity values are stated in pounds (lbs). The pump pressure is 5,221 psi (360 bar). The values, in accordance with ISO 10567, amount to 75% of the static tipping load or 87% of the hydraulic lifting force (marked \*). They apply to slewing operations through 360° on a firm and level surface. Values in brackets apply to the longitudinal direction of the undercarriage. "Non-supported" values apply when the load is hoisted above the front or rear axle. The weight of the attached hoisting equipment (quick attach, grab, magnet, load hook, etc.) must be deducted from the capacity values. Load holding valves on the lift cylinders and an overload warning device are required for crane operations.

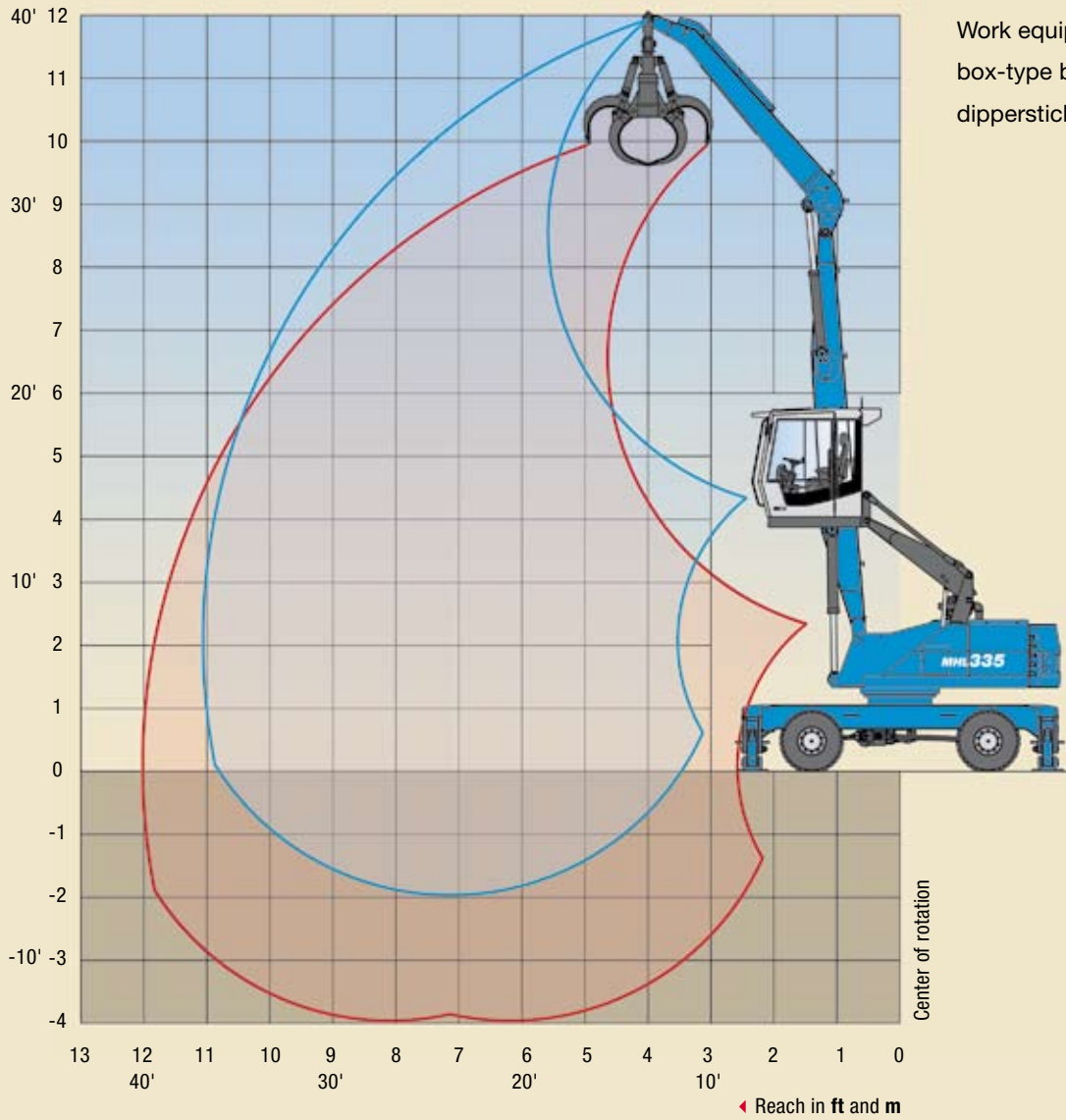
### RECOMMENDED ATTACHMENTS

Loading system 39.4' (12 m)

<b>LOAD HOOK</b>	22,046 lbs (10 t)
<b>Terex® FUCHS CACTUS GRAB</b>	0.52 yd <sup>3</sup> (0.4 m <sup>3</sup> ), open or half-closed tines
<b>Terex® FUCHS CACTUS GRAB</b>	0.78 yd <sup>3</sup> (0.6 m <sup>3</sup> ), open or half-closed tines
<b>CLAMSHELL GRAB</b>	0.85 yd <sup>3</sup> (0.65 m <sup>3</sup> ) density to 2,360 lbs/yd <sup>3</sup> (1,400 kg/m <sup>3</sup> )
<b>CLAMSHELL GRAB</b>	1.3 yd <sup>3</sup> (1.0 m <sup>3</sup> ) density to 1,348 lbs/yd <sup>3</sup> (800 kg/m <sup>3</sup> )
<b>Terex® FUCHS MAGNET PLATE MP 1150</b>	dia. = 3.8 ft (1,150 mm) with 11 kW magnet system
<b>Terex® FUCHS MAGNET PLATE MP 1250</b>	dia. = 4.1 ft (1,250 mm) with 13 kW magnet system

# WORKING DIAGRAM

MHL 335 REACH 36' (11 m)



# LIFTING CAPACITY

## MHL 335 REACH 36' (11 m)

HEIGHT (ft)	UNDERCARRIAGE STABILIZERS	REACH (ft)				
		15	20	25	30	35
35	non supported		(12,640*)			
	4-pt. supported		12,640* (12,640*)			
30	non supported		(13,910)	(9,710)		
	4-pt. supported		14,050* (14,050*)	12,580* (12,580*)		
25	non supported		(13,830)	(9,710)	(7,210)	
	4-pt. supported		14,160* (14,160*)	12,900* (12,900*)	11,040 (11,120*)	
20	non supported		(13,470)	(9,520)	(7,150)	
	4-pt. supported		15,170* (15,170*)	13,390* (13,390*)	10,970 (12,140*)	
15	non supported	(20,120)	(12,860)	(9,200)	(6,980)	(5,490)
	4-pt. supported	21,430* (21,430*)	16,940* (16,940*)	14,280* (14,300*)	10,790 (12,560*)	8,520 (10,150*)
10	non supported	(18,430)	(12,110)	(8,800)	(6,770)	(5,390)
	4-pt. supported	26,120* (26,120*)	19,080* (19,080*)	13,840 (15,400*)	10,560 (13,100*)	8,420 (10,440)
5	non supported	(17,020)	(11,420)	(8,430)	(6,560)	(5,290)
	4-pt. supported	21,490* (21,490*)	18,730 (20,880*)	13,430 (16,330*)	10,330 (12,910)	8,310 (10,330)
0	non supported	(15,390*)	(10,970)	(8,150)	(6,400)	(5,230)
	4-pt. supported	15,390* (15,390*)	18,210 (21,630*)	13,120 (16,640)	10,160 (12,730)	8,250 (10,260)
-5	non supported		(10,790)	(8,020)	(6,340)	
	4-pt. supported		18,000 (20,990*)	12,970 (16,340*)	10,090 (16,340)	

Capacity values are stated in pounds (lbs). The pump pressure is 5,221 psi (360 bar). The values, in accordance with ISO 10567, amount to 75% of the static tipping load or 87% of the hydraulic lifting force (marked \*). They apply to slewing operations through 360° on a firm and level surface. Values in brackets apply to the longitudinal direction of the undercarriage. "Non-supported" values apply when the load is hoisted above the front or rear axle. The weight of the attached hoisting equipment (quick attach, grab, magnet, load hook, etc.) must be deducted from the capacity values. Load holding valves on the lift cylinders and an overload warning device are required for crane operations.

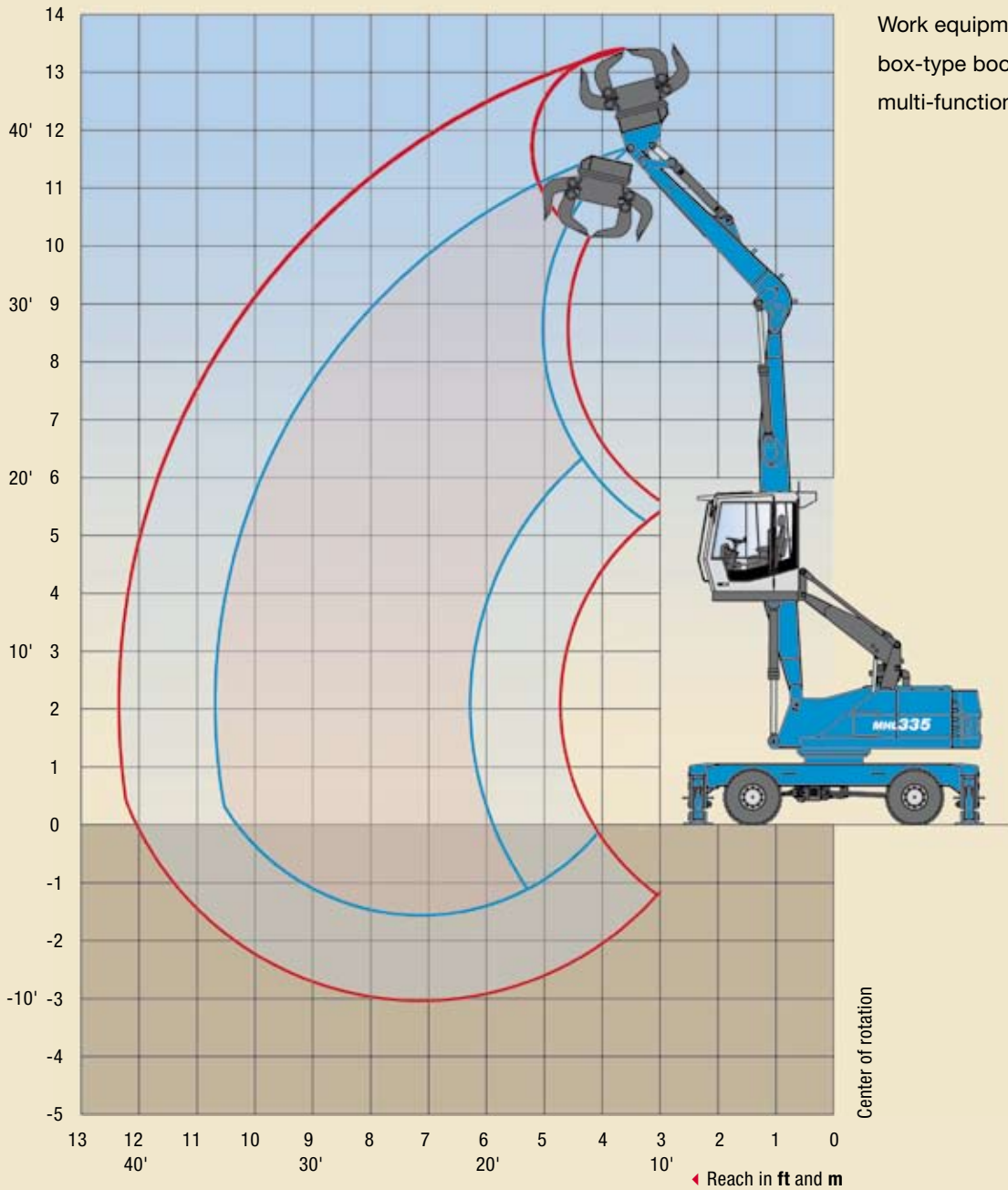
### RECOMMENDED ATTACHMENTS

Loading system 36' (11 m)

<b>LOAD HOOK</b>	22,046 lbs (10 t)
<b>Terex® FUCHS CACTUS GRAB</b>	0.52 yd <sup>3</sup> (0.4 m <sup>3</sup> ), open or half-closed tines
<b>Terex® FUCHS CACTUS GRAB</b>	0.78 yd <sup>3</sup> (0.6 m <sup>3</sup> ), open or half-closed tines
<b>Terex® FUCHS CACTUS GRAB</b>	1.0 yd <sup>3</sup> (0.8 m <sup>3</sup> ), open or half-closed tines
<b>CLAMSHELL GRAB</b>	1.3 yd <sup>3</sup> (1.0 m <sup>3</sup> ) density to 2,360 lbs/yd <sup>3</sup> (1,400 kg/m <sup>3</sup> )
<b>CLAMSHELL GRAB</b>	2.0 yd <sup>3</sup> (1.6 m <sup>3</sup> ) density to 1,348 lbs/yd <sup>3</sup> (800 kg/m <sup>3</sup> )
<b>Terex® FUCHS MAGNET PLATE MP 1150</b>	dia. = 3.8 ft (1,150 mm) with 11 kW magnet system
<b>Terex® FUCHS MAGNET PLATE MP 1250</b>	dia. = 4.1 ft (1,250 mm) with 13 kW magnet system

# WORKING DIAGRAM

## MHL 335 REACH 35' (10.7 m) MULTI-FUNCTION STICK



Work equipment:  
box-type boom 21.3' (6.5 m),  
multi-function stick 13.1' (4.0 m)

# LIFTING CAPACITY

## MHL 335 REACH 35' (10.7 m) MULTI-FUNCTION STICK

HEIGHT (ft)	UNDERCARRIAGE STABILIZERS	REACH (ft)				
		15	20	25	30	35
35	non supported		(11,060*)			
	4-pt. supported		11,060* (11,060*)			
30	non supported		(13,250)	(9,060)		
	4-pt. supported		14,220* (14,220*)	(11,420*) (11,420*)		
25	non supported		(13,170)	(9,100)	(6,600)	
	4-pt. supported		14,280* (14,280*)	(12,790*) (12,790*)	(9,180*) (9,180*)	
20	non supported	(18,470*)	(12,790)	(8,910)	(6,560)	
	4-pt. supported	18,470* (18,470*)	15,250* (15,250*)	13,220* (13,220*)	10,380 (11,840*)	
15	non supported	(19,170)	(12,150)	(8,580)	(6,410)	
	4-pt. supported	22,090* (22,090*)	16,950* (16,950*)	13,650 (14,060*)	10,210 (12,190*)	
10	non supported	(17,420)	(11,380)	(8,180)	(6,200)	(4,850)
	4-pt. supported	26,530* (26,530*)	18,760 (18,950*)	13,210 (15,050*)	9,990 (12,570)	7,880 (9,900)
5	non supported	(16,130)	(10,720)	(7,820)	(6,000)	(4,770)
	4-pt. supported	16,490* (16,490*)	18,010 (20,470*)	12,810 (15,830*)	9,770 (12,350)	7,790 (9,810)
0	non supported	(13,950*)	(10,330)	(7,570)	(5,870)	
	4-pt. supported	13,950* (13,950*)	17,550 (20,850)	12,540 (16,030)	9,630 (12,190)	
-5	non supported			(7,470)		
	4-pt. supported			12,430 (15,320*)		

Capacity values are stated in pounds (lbs). The pump pressure is 5,221 psi (360 bar). The values, in accordance with ISO 10567, amount to 75% of the static tipping load or 87% of the hydraulic lifting force (marked \*). They apply to slewing operations through 360° on a firm and level surface. Values in brackets apply to the longitudinal direction of the undercarriage. “Non-supported” values apply when the load is hoisted above the front or rear axle. The weight of the attached hoisting equipment (quick attach, grab, magnet, load hook, etc.) must be deducted from the capacity values. Load holding valves on the lift cylinders and an overload warning device are required for crane operations.

# TECHNICAL DATA

## MHL 335



OPERATING WEIGHT	
	51,808 - 55,115 lbs (23.5 - 25 t)

DIESEL ENGINE	
<b>MANUFACTURER AND MODEL</b>	Deutz TCD 2012 L06 2V
<b>DESIGN</b>	6 Cylinder Inline
<b>ENGINE CONTROL</b>	EMR III
<b>TYPE</b>	4-stroke Diesel engine, direct common-rail fuel-injection, turbocharger with intercooling
<b>ENGINE OUTPUT</b>	153 HP (114 kW)
<b>NOMINAL SPEED</b>	2,000 rpm
<b>DISPLACEMENT</b>	366 in <sup>3</sup> (6 L)
<b>COOLING SYSTEM</b>	Liquid intercooling with temperature controlled fan speed
<b>EMISSIONS STANDARD</b>	TIER III and COM III
<b>AIR FILTER DESIGN</b>	Two-stage filter with safety valve
<b>FUEL CAPACITY (USABLE)</b>	79.25 U.S. gal (300 L)

ELECTRICAL SYSTEM	
<b>OPERATING VOLTAGE</b>	24 V
<b>BATTERIES</b>	2 x 12 V / 100 Ah / 760 A (in accordance with EN)
<b>LIGHTING SET</b>	1 dipperstick-mounted floodlight, 1 headlight mounted to uppercarriage, 1 floodlight attached to cab floor, rear side-marker and turn signal lamps
<b>OPTION</b>	Magnet system 11 or 13 kW

TRAVEL DRIVE	
	Hydrostatic drive through infinitely variable axial piston motor and directly mounted travel brake valves, two-speed power shift gear, 4-wheel drive
<b>TRAVEL SPEED 1ST GEAR</b>	max 3.1 mph (5 km/hr)
<b>TRAVEL SPEED 2ND GEAR</b>	max 12.4 mph (20 km/hr)
<b>GRADEABILITY</b>	max 45%
<b>TURNING RADIUS</b>	26.9' (8.2 m)

SWING SYSTEM	
<b>RING GEAR</b>	Internally toothed ball ring gear (double row)
<b>DRIVE</b>	Three-stage planetary gear with integrated multi-disc brake
<b>UPPER CARRIAGE SWING SPEED</b>	Infinitely variable from 0 - 8 rpm
<b>PIVOT BRAKE</b>	Electrically operated

UNDERCARRIAGE	
<b>FRONT AXLE</b>	Planetary drive axle with integrated drum brake, rigidly mounted max steering angle 27°
<b>REAR AXLE</b>	Oscillating planetary drive rear axle with integrated drum brake and selectable oscillating axle lock
<b>TIRES</b>	Solid rubber, elastic tires 8-fold 10.00 - 20
<b>STABILIZER VARIATIONS</b>	4-Point stabilizers

BRAKE SYSTEM	
<b>SERVICE BRAKE</b>	Hydraulic single-circuit braking system acting on all four wheel pairs
<b>PARKING BRAKE</b>	Electrically operated disc brake at transmission, acting on both axles

HYDRAULIC SYSTEM	
	REXROTH mobile hydraulic system with load limit control and fuel conserving power demand control fan speed, Separate oil cooler, temperature-regulated fan speed. Hydraulic oil filter: filter elements integrated in the oil tank; maintenance interval: 3,000 operating hours. Central lubrication system
<b>MAX. PUMP CAPACITY</b>	100.3 U.S. gal/min (380 L/min)
<b>MAX. OPERATING PRESSURE</b>	4,641 / 5,221 psi (320 / 360 bar)
<b>HYDRAULIC OIL TANK</b>	90 U.S. gal (340 L)

OPERATOR CAB	
	Elastically supported, infinitely variable hydraulically height-adjustable with max eye level of 17.4' (5.3 m). Sound-deadened, heat-insulated panoramic windows for optimum all-around view, windshield with pull-down sunblind that slides under cab roof, sliding window in cab door, steering column height and tilt adjustable
<b>HEATING</b>	Infinitely variable hot water heating with 3-speed fan, 4 adjustable defroster nozzles
<b>OPERATOR'S SEAT</b>	Air-cushioned comfort seat with integrated headrest, safety belt and lumbar support, seat heating with integrated a/c function optional. Seat position, seat inclination and seat cushion multi-adjustable in line with position of armrests and pilot control units, allowing comfortable operation
<b>MONITORING</b>	Ergonomic, glare-free instrument layout, multi-function display; automatic monitoring; warning and storage of deviating operating conditions, e.g. filter pressure monitoring with warning indicator and shutdown of pilot controls, warning and shutdown of pilot controls when exceeding maximum hydraulic fluid temperature
<b>AIR CONDITIONING</b>	Automatic air-conditioning
<b>SOUND POWER LEVEL</b>	(guaranteed) in accordance with guideline 2000/14 EG

SAFETY INSTALLATIONS	
	For crane operations in accordance with EN 474-5

OFFICIAL HOMOLOGATION	
	Certification according to CE-regulations



# EQUIPMENT

## MHL 335

ENGINE	STANDARD	OPTION
Turbocharger	●	
Intercooling	●	
Direct electronic fuel injection/Common Rail	●	
Automatic idle	●	
Interface for engine diagnosis	●	
Temperature controlled fan drive	●	

UNDERCARRIAGE	STANDARD	OPTION
2-speed power-shift transmission	●	
4-point stabilizers	●	
4-point stabilizers, individually controllable		●
Stabilizer cylinders with integrated two-way check valves	●	
All-wheel drive	●	
Piston rod protection on the stabilizer cylinders	●	
Stabilizer plate 20" x 14" (500 x 350 mm)	●	
Rear axle oscillating lock	●	
Dozer blade in addition to 4-point stabilizers		●
Special paint		●
Drum brakes	●	
Tool box	●	

UPPERCARRIAGE	STANDARD	OPTION
Electric refueling pump		●
Lighting protection		●
Maintenance hood, actuated by gas strut, with mechanical locking device	●	
Lockable cleaning access openings on radiator	●	
Separate radiator system for ambient temperatures up to 122° F (50° C)	●	
Separate oil cooler with temperature-controlled fan drive	●	
Back-up alarm	●	
Special paint		●
Quick drain valve on diesel tank (delivered in tool box)	●	
Quick drain valve on hydraulic oil tank	●	
Quick drain valve on water cooler	●	
Quick drain valve on engine oil pan	●	
Reversible fan for engine and hydraulic oil cooler		●
Automatic central lubrication system	●	

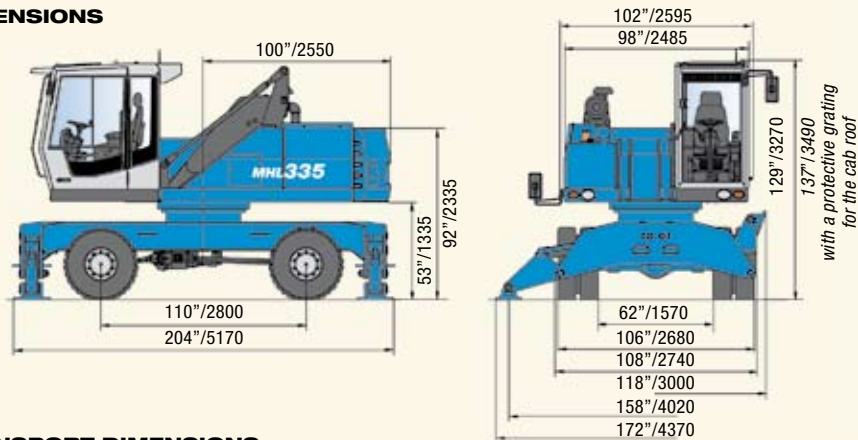
CAB	STANDARD	OPTION
Lift-up skylight in cab roof	●	
Air-cushioned operator's seat with headrest, safety belt and lumbar support	●	
FOPS-Protective cab guard		●
Hinged front windshield	●	
Front windows, break-resistant (LEXAN)		●
Bullet-proof glass, front and top		●
Cab system, height adjustable	●	
Air-conditioning	●	
Steering column, height and tilt adjustable	●	
Multi-functional display	●	
Fire extinguisher, dry powder		●
Radio and CD player	●	
Flashing beacon	●	
Sliding window in cab door	●	
Safety glass	●	
Seat heating		●
Windshield washer system	●	

EQUIPMENT	STANDARD	OPTION
Working floodlights on cab floor	●	
Working floodlights on uppercarriage	●	
Working floodlights on dipperstick	●	
Close proximity range limiter for dipperstick	●	
Coolant and hydraulic oil level monitoring system	●	
Load holding protection for boom cylinders	●	
Load holding protection for stick cylinders	●	
Dipperstick shock protection	●	
Lubrication of the grab suspension through the central lubrication system	●	
Overload warning / shut-off installation		●
XENON floodlight on dipperstick		●
XENON floodlight on uppercarriage		●
XENON floodlight on cab roof		●
Quick attach coupling on dipperstick	●	

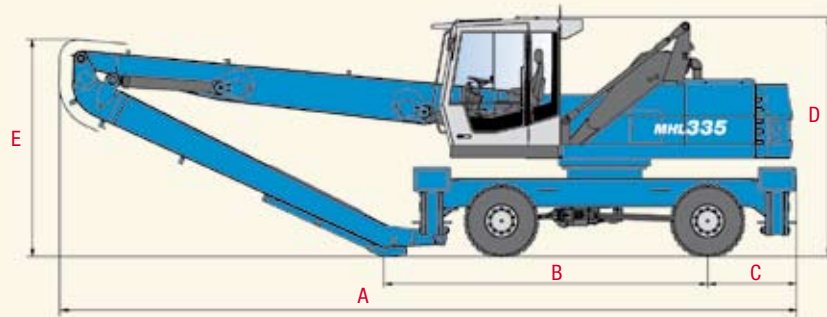


## Material Handler - MHL 335

### DIMENSIONS



### TRANSPORT DIMENSIONS



DIMENSIONS	REACH 39.4' (12 m)	REACH 36' (11 m)	REACH 35' (10.7 m) (MULTI-FUNCTION STICK)
A	393" (10,000 mm)	393" (10,000 mm)	398" (10,100 mm)
B	173" (4,400 mm)	217" (5,500 mm)	211" (5,350 mm)
C	47" (1,185 mm)	47" (1,185 mm)	47" (1,185 mm)
D	129" (3,270 mm) 137" (3,490 mm)*	129" (3,270 mm) 137" (3,490 mm)*	129" (3,270 mm) 137" (3,490 mm)*
E	118" (3,000 mm)	106" (2,700 mm)	109" (2,780 mm)

\* with a protective grating for the cab roof

Effective Date: April, 2008. Product specifications and prices are subject to change without notice or obligation. The photographs and/or drawings in this document are for illustrative purposes only. Refer to the appropriate Operator's Manual for instructions on the proper use of this equipment. Failure to follow the appropriate Operator's Manual when using our equipment or to otherwise act irresponsibly may result in serious injury or death. The only warranty applicable to our equipment is the standard written warranty applicable to the particular product and sale and Terex makes no other warranty, express or implied. Products and services listed may be trademarks, service marks, or trade names of Terex Corporation and/or its subsidiaries in the USA and other countries. All rights are reserved. Terex is a registered trademark of Terex Corporation in the USA and many other countries. © 2008 Terex Corporation.

Terex Fuchs  
 8800 Rostin Road, Southaven, MS 38671 U.S.A.  
 Tel +1 (662) 393-1800 Fax +1 (662) 393-1700  
 Email sales@terexca.com  
 www.terex.com  
 www.terexca.com

